



Contents

3 Frameless Flat Rooflight

4 Technical Specification

5 Glass Options

6 Frameless Roof Lantern & Pyramid

7 Technical Specification

8 Electric Opening Rooflight

9 Technical Specification

10 Manual Opening Rooflight

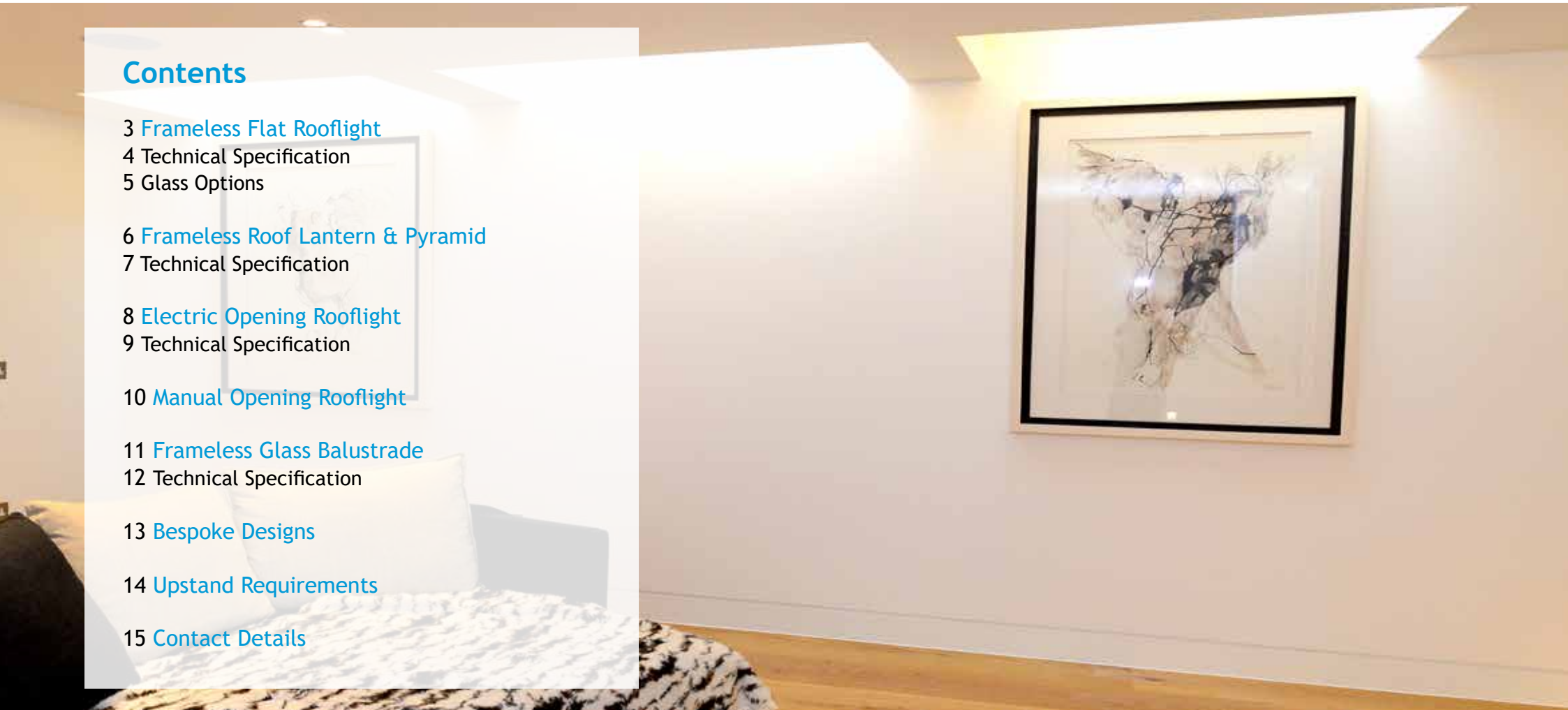
11 Frameless Glass Balustrade

12 Technical Specification

13 Bespoke Designs

14 Upstand Requirements

15 Contact Details





Frameless Flat Rooflight

This is a unique flat Rooflight system that is ultra slim & aesthetically pleasing. It's contemporary style suits both a modern & period building to achieve a great look wherever it is situated. Performance of our Rooflight is industry leading in U values and weather durability, which has been tested to make sure the product surpasses all current regulations and will stand the test of time. All flat Rooflights are pitched at 5 degrees as an industry standard to ensure minimal pooling on the Rooflight. We

only use top specification glass structurally calculated by glass engineers to ensure safety and longevity of our products.

All components used in the manufacture and installation are all designed and made in Britain. The overall U value of the Rooflight is 1.6 using a double glazed unit of 1.0. All our Rooflights are hand made by highly trained staff who implement strict manufacturing guidelines and quality control to make sure the first is as good as the last.

Specification

- Solar Reflective Self Cleaning Glass
- Structural Grade Sealed Double Glazed Unit
- Black Thermal Spacer Bar
- Argon Gas Filled
- Soft Coat
- Dow 3362 Structural Sealant
- Toughened
- Polished
- Arrised Edges



Product Specification

- Thermally broken aluminium comprising of 2 x 27mm polyamide inserts
- Finished in a tough and long lasting polyester powdercoated paint
- 48mm overhang for a better weather tight seal
- Extruded frame can accommodate 20mm-44mm double glazed unit plus Walk-On glass
- Glass from 1.0 U value to 0.2
- Glass spec is subject to size
- Available in Double Glazed or Triple Glazed
- Bespoke sizes available

Standard Sizes

(External Manufacturing Sizes)

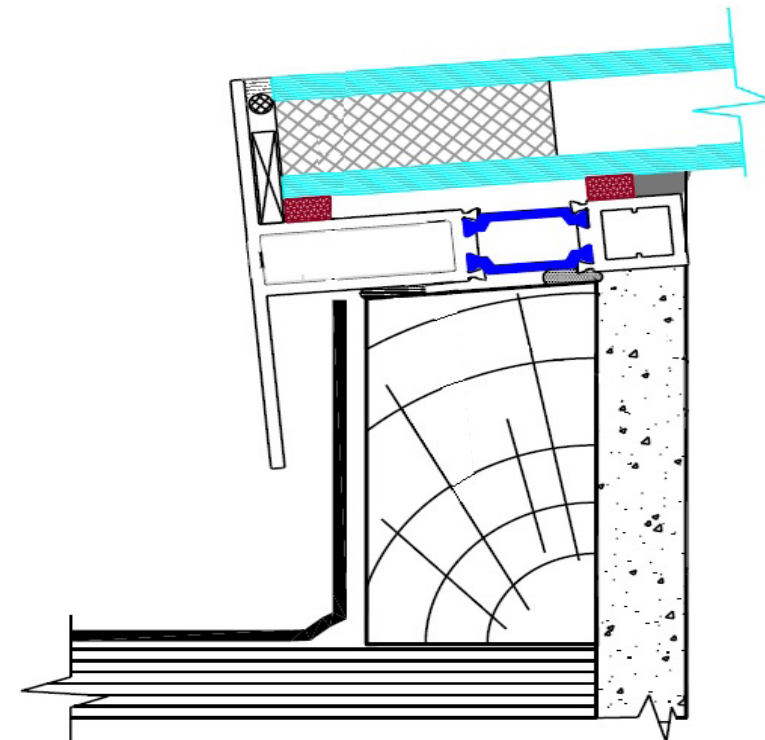
1000mm x 1000mm
 1200mm x 1200mm
 1500mm x 1500mm
 1700mm x 1700mm
 2000mm x 2000mm

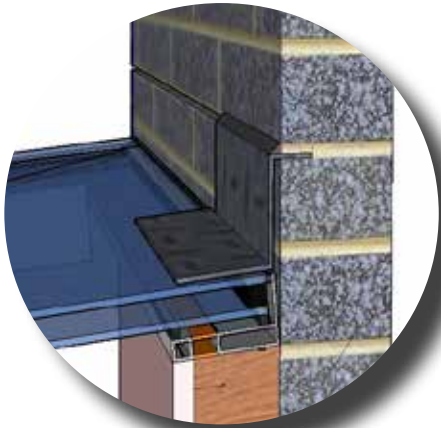
1000mm x 1500mm
 1000mm x 2000mm
 1000mm x 2500mm
 1000mm x 3000mm

Minimum size:
 500mm x 500mm

Maximum size in one pane of glass:
 3000mm x 1800mm

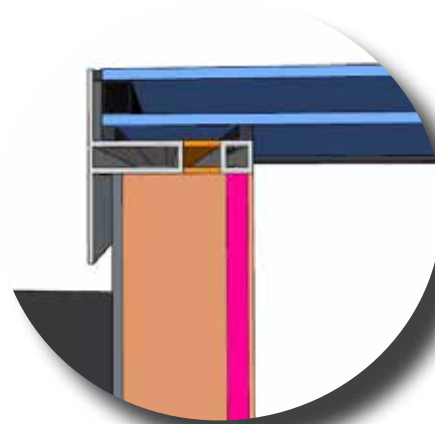
Lead time 12-14 working days





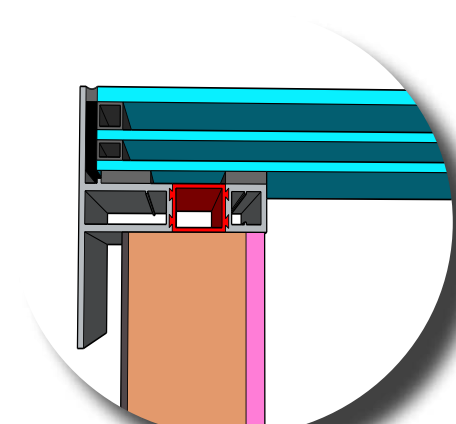
Wall Abutment

Wall abutment details can be tailored into the manufacturing of your Rooflight if required.



Double Glazing

Our standard Rooflights are manufactured with silicone sealed double glazed units with a U-Value of 1.0.



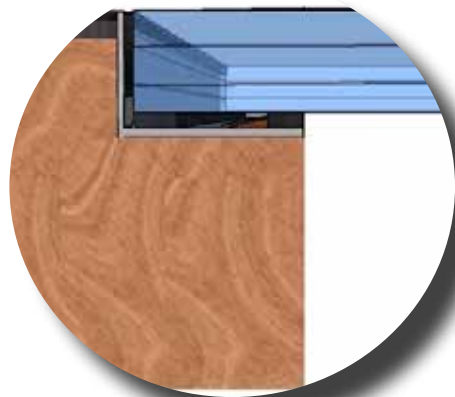
Triple Glazing

Upgrade to a triple glazed unit for a glass U-Value of 0.2.



Privacy Glass

For extra privacy, our Rooflights can also be manufactured with Satin Glass.



Internal Walk On Unit

Internal use Walk-on units are manufactured with a minimum of 33mm Component Laminated glass.



External Walk On Unit

External use walk-on units are manufactured with a stepped inner pane as well as a 33mm Component Laminated Glass specification.



Frameless Roof Lantern/Pyramid

The Ultra-modern Frameless Roof Lantern/Pyramid is one of the slimmest designs on the market today, providing more light transmittance than any other Roof Lantern.

Traditionally, other companies use bars which can make them bulky and obtrusive and U values are also effected, this makes the Frameless Roof Lantern more efficient and aesthetically pleasing.

Consisting of glass to glass joins with thermal foam barrier using a glass of just 1.0 U value the product will keep you warm even in the harshest of conditions.

Specification

- Solar Reflective Glass
- Structural Grade Sealed Double Glazed Unit
- Black Thermal Spacer Bar
- Argon Gas Filled
- Soft Coat
- Dow 3362 Structural Sealant
- Toughened



Product Specification

- Thermally broken comprising of 2 x 32mm polyamide inserts
- Finished in a tough and long lasting polyester powdercoated paint
- 23mm overhang for a better weather tight seal
- Available in Anthracite grey RAL 7016m or Jet Black 9005m
- Glass from 1.0 U value to 0.2
- Glass spec is 4 / 22 / 4mm
- Structural glass to glass joins
- Lead time 12-14 working days

Standard Sizes

(External Manufacturing Sizes)

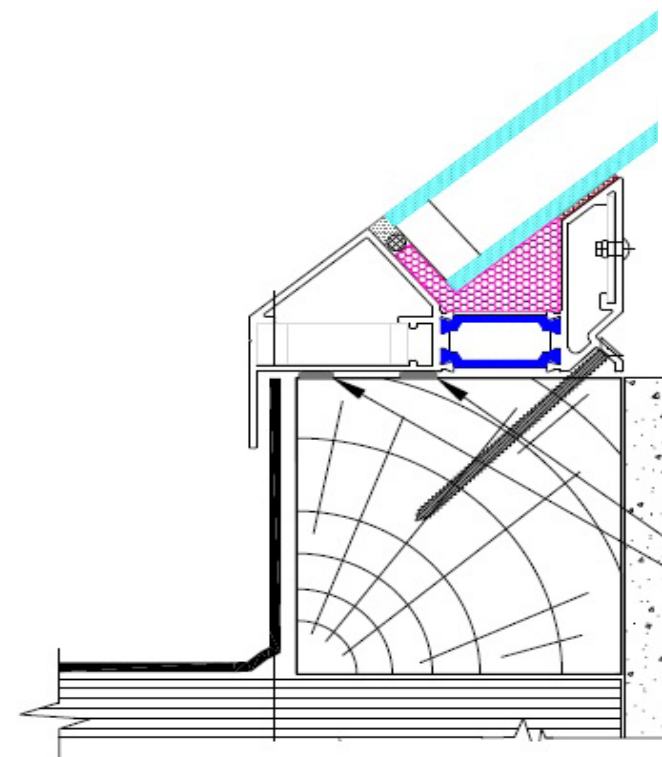
Pyramid:

1000mm x 1000mm
 1200mm x 1200mm
 1500mm x 1500mm
 1700mm x 1700mm
 2000mm x 2000mm (maximum size)

Lantern:

1000mm x 1500mm
 1000mm x 2000mm
 1000mm x 2500mm
 1000mm x 3000mm
 1500mm x 3000mm (maximum size)

Bespoke sizes also available





Opening Rooflight

Our Opening Rooflight boasts a thermal break on both outer-fame and sash. With larger 35mm quad polyamide inserts for unbeatable thermal quality, this will be one of the most attractive and thermally efficient Frameless Opening Rooflights on the market to date.

With an overall depth of 165mm and a back to front measurement of 119mm, it houses an electric chain actuator that can be switch controlled or

wireless application can be achieved. More importantly weather plays a big role when it comes to the design of the product so our Opening Rooflight has been manufactured with an industry leading triple seal gasket system that is sure to keep weather out even in the harshest of conditions.

Specification

- Solar Reflective Self Cleaning Glass
- Structural Grade Sealed Double Glazed Unit
- Black Thermal Spacer Bar
- Argon Gas Filled
- Soft Coat
- Dow 3362 Structural Sealant
- Toughened
- Polished



Product Specification

- 4 x 35mm Polyamide inserts
- Triple Seal Gasket System
- Available in Anthracite grey RAL 7016m or Jet Black 9005m
- Glass Specs - 6/18/6 or 6/20/4
- Double Glazed
- Thermally Broken Aluminium
- Finished Upstand Width to be 95mm min / 105mm max
- Maximum size 1500 x 3200mm
- Lead time 3 weeks

Electric Operated

- Electric Opening of 400mm
- Includes wireless remote
- Rain sensor available
- Wind & rain sensor available
- Rocker switch available
- 230 volt motors



Wireless Remote (included)



Rain Sensor



Rocker Switch



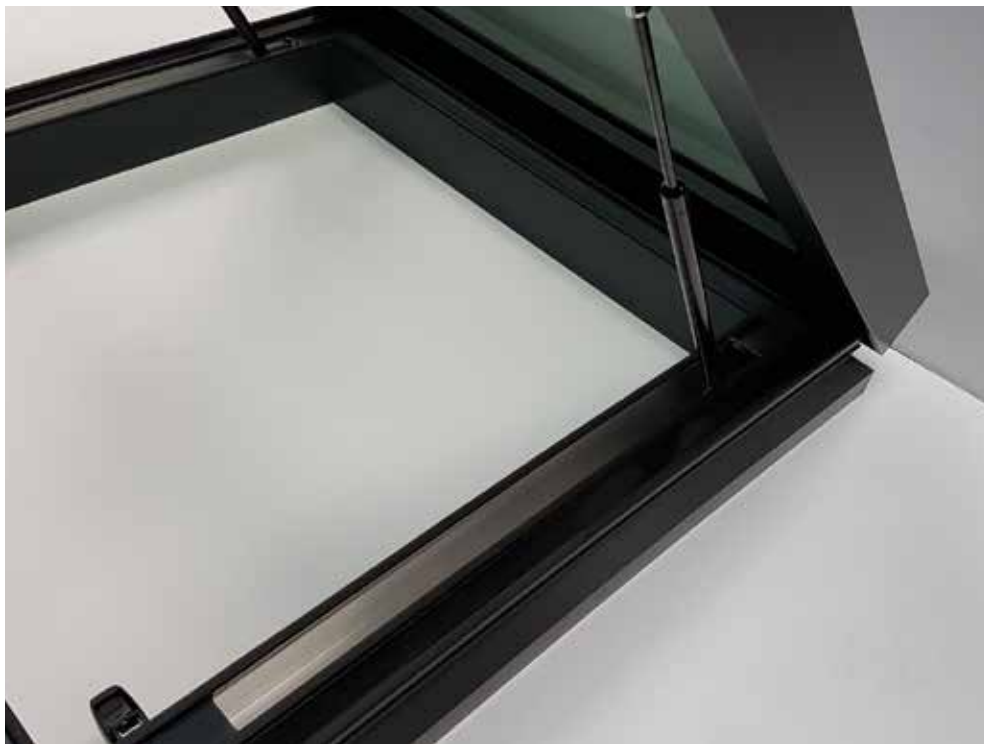
Wind Sensor



Rain & Wind Sensor



EVC Unit (Rain, Temperature & Wind)



Maintenance Hatch

- Opening of 90 degrees for maintenance
- Gas Strut Assisted
- Stainless Steel T Handle
- Lockable Security Latches
- Maximum size 1000 x 1200mm



Ventilation Hatch

- Opening of 300mm for Ventilation
- Chrome Winder
- 2m Extension Pole
- Tandem Winder for larger applications
- Maximum size 1000 x 2000mm





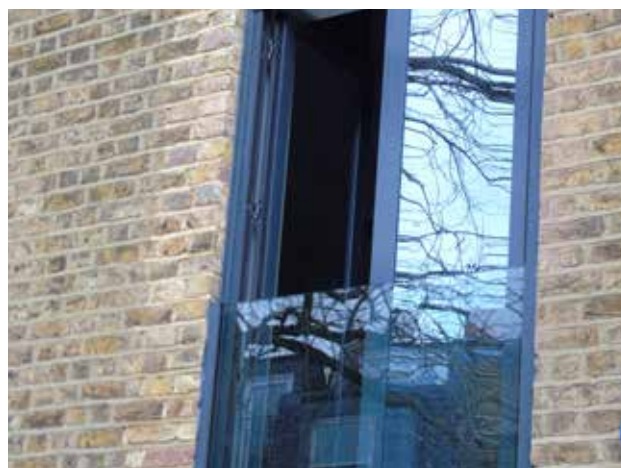
Integrated Glass Balustrade

This is a revolutionary new design of fully integrated frameless glass balustrade system which is thermally broken and is fully integrated to fit bi-fold, sliding, french doors and tilt and turn window systems, it has been tested to BS6180 and surpassed current regulations.

This will be a choice for architects and for people who have specific design requirements, not to mention this has never been achieved in the industry until now.

Specification

- New glass laminate for strength
- 20% thinner glass than conventional glass balustrades
- Glass spec 16.8mm Soteria Crystal Clear

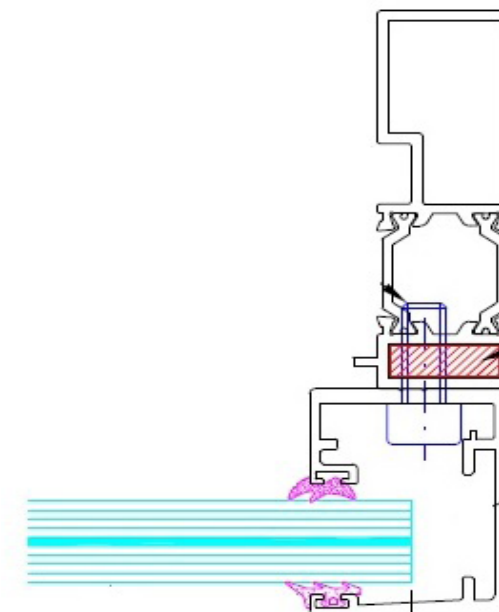


Product Specification

- Thermally broken aluminium
- Finished in a tough and long lasting polyester powder coated paint
- Ral colour 7015m / 7016m / White
- Fully tested to BS6180
- No top or bottom rails obstructing the view

Product Specification

- System fixed into the main structure of the building
- Doors must be ordered after balustrade calculations have been done
- Maximum width 2500mm
- Lead time 3 weeks



BESPOKE



Up & Over Ridgeline

- Thermally broken aluminium
- Structural glass to glass joins
- Solar Control Self Cleaning Glass



Frameless Glass Box

- Can be retro fitted into existing openings
- Supplied fully bonded
- Thermally Broken Aluminium



Bespoke

If you have a bespoke design, please do not hesitate to contact us with your design requirements.

Upstand Requirements for Flat Rooflight

Minimum upstand width: 70mm

Maximum Upstand Width: Up to 200mm

*Widths over 80mm will require a bespoke blackout around the edge

Minimum Pitch: 5 degrees

Maximum Pitch: 45 degrees

*Please note water will not pool off the Rooflight on installations under a 5 degree pitch

Upstand Requirements for Roof Lantern

Minimum upstand width: 70mm

Maximum Upstand Width: Up to 100mm

Must be installed on a Roof with 0 degree pitch

Lantern extrusion/glass pitch: 40 degrees only

Upstand Requirements for Opening Rooflights *(Manual & Electric)*

Minimum upstand width: 95mm

Maximum Upstand Width: 105mm

*Widths over 105mm will require a the metal flange on the extrusion to be cut off

Minimum Pitch: 5 degrees

Maximum Pitch: 15 degrees

*Please note water will not pool off the Rooflight on installations under a 5 degree pitch

All Opening Rooflights must be situated at least 100mm away from walls



NuDawn
Unit 1
Dunsdon Farm Estate
Pancrasweek
Holworthy, Devon
EX22 7JW

Tel: 0333 987 4452

(A Trading Name of Tuscan Foundry Products Ltd. Registered 04742286)

